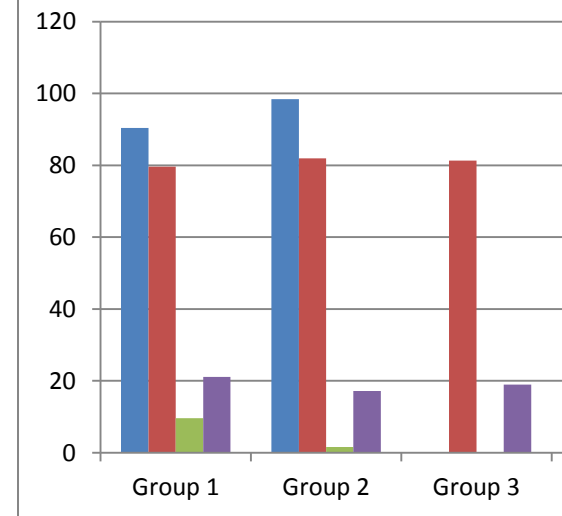


Appendix C: Cell culture results - Class 2012

Slide#	DAPI dead cells	DAPI live cells	Total # of DAPI nuclei	# of GFAP positive	% GFAP+ live cells	Means, % GFAP in conditions	SD, % GFAP in conditions	# of TuJ1 positive
TuJ1 and GFAP								
Neuronal medium								
6-day culture								
Control								
Gr-1, d6-1	6	29		24	82.8	90.4	10.0	5
Gr-1, d6-2	3	51		50	98.0			1
Gr-1, d6-3	3	37		37	100.0			0
Gr-1, d6-4 OUTLIER	15	7		3	42.9			4
Gr-1, d6-5	4	26		21	80.8			5
Gr-2, d6-1	7	8		8	100.0	98.4	2.2	0
Gr-2, d6-2	1	34		34	100.0			0
Gr-2, d6-3	10	48		46	95.8			2
Gr-2, d6-4	2	32		32	100.0			0
Gr-2, d6-5	13	75		72	96.0			3
Gr-4, d6-1	0	39		38	97.4	92.0	11.4	1
Gr-4, d6-2	2	57		57	100.0			0
Gr-4, d6-3	12	42		38	90.5			4
Gr-4, d6-4	7	55		54	98.2			1
Gr-4, d6-5	5	26		17	65.4			9
Gr-4, d6-6	0	17		17	100.0			0
Gr-4, d6-7	6	32		29	90.6			3
Gr-4, d6-8	1	34		32	94.1			2
Average				n=17	93.5		9.4	
Experimental								
Gr-1, d6-1	2	30		29	96.7	79.6	21.6	1
Gr-1, d6-2	7	67		63	94.0			4
Gr-1, d6-3	1	19		8	42.1			11
Gr-1, d6-4	4	70		68	97.1			3
Gr-1, d6-5	5	39		36	92.3			3
Gr-1, d6-6	14	25		20	80.0			6
Gr-1, d6-7	0	26		22	84.6			4

Gr-1, d6-8	1	14	7	50.0			7
Gr-2, d6-1	3	88	72	81.8	82.0	16.5	16
Gr-2, d6-2	5	36	26	72.2			10
Gr-2, d6-3	3	15	9	60.0			6
Gr-2, d6-4	2	62	62	100.0			0
Gr-2, d6-5	2	47	45	95.7			0
Gr-3, d6-1	1	17	16	94.1	81.3	13.9	1
Gr-3, d6-2	0	13	9	69.2			4
Gr-3, d6-3	15	26	16	61.5			10
Gr-3, d6-4	3	28	24	85.7			4
Gr-3, d6-5	3	26	19	73.1			7
Gr-3, d6-6	1	42	36	85.7			6
Gr-3, d6-7	3	46	46	100.0			1
Gr-4, d6-1	1	20	19	95.0	89.5	10.1	1
Gr-4, d6-2	10	11, >5 stripped off cell bodies	12 w/o nuclei	#VALUE!			5-7
Gr-4, d6-3 OUTLIER	4	12	1	8.3			11
Gr-4, d6-4	1	18	14	77.8			4
Gr-4, d6-5	1	46	44	95.7			2
Average			n=23	81.9		16.4	

	<i>Control</i>	<i>Experimental</i>	<i>Control</i>	<i>Experimental</i>
	<i>Mean GFAP</i>	<i>Mean GFAP</i>	<i>Mean TuJ1</i>	<i>Mean TuJ1</i>
Group 1	90.4	79.6	9.6	21.1
Group 2	98.4	82.0	1.6	17.2
Group 3		81.3		19.0
Group 4	92.0	89.5	8.0	10.5
Average	93.5	81.9	6.5	18.2
	n=17	n=23	n=17	n=23



% TuJ1+ live cells	Means, % TuJ1 in conditions	SD, % TuJ1 in conditions	
17.2	9.6	10.0	
2.0			
0.0			
57.1			
19.2			
0.0	1.6	2.2	
0.0			
4.2			
0.0			
4.0			
2.6	8.0	11.4	
0.0			
9.5			
1.8			
34.6			
0.0			
9.4			
5.9			
6.5		9.4	
3.3	21.1	21.5	
6.0			
57.9			
4.3			
7.7			
24.0			
15.4			

50.0		
18.2	17.2	17.5
27.8		
40.0		
0.0		
0.0		
5.9	19.0	13.4
30.8		
38.5		
14.3		
26.9		
14.3		
2.2		
5.0	10.5	10.1
91.7		
22.2		
4.3		
18.2		16.5

